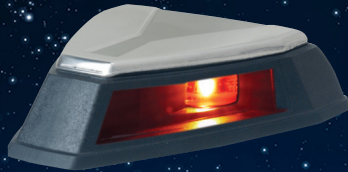


**ABYC
C-5
Compliant**

C-5 Compliant

**EN/ISO
19009**

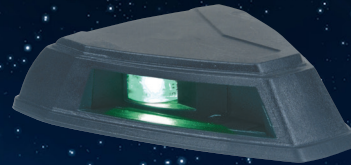
**Stylish
Stainless Steel Top**



Rounded Style



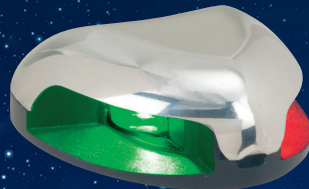
Classic Style



**Fig. 0655
Bi-Color Lights**



**Fig. 0626
Side Lights**



**Fig. 0625 Stealth
Bi-Color Light**



**Fig. 0647
Bi-Color Light**



**Fig. 0648
Side Lights**

**Figs. 0625, 0626, 0647 & 0648 Lights
fit existing older style mounting footprints**

LED Navigation Lights - 2nm

Certified for both USA and European Markets

For use on power driven vessels under 20 m (65.6 Ft.)

LED Navigation Light Features:

- Horizontal mount bi-color & side lights
- High tech, self contained LED modules
- New stylish designs: classic or rounded
- Top options: plain or stainless steel
- Standard colors: black or white

Meets Global Specs for:

- ABYC C-5
- NMMA Type Accepted
- EN/ISO 19009:2015
- ABYC A-16 (2016)
- 1972 COLREGS
- RCD 2013/53/EU
- USCG 33 CFR - 2nm

Tech Specs:

- For 12 Volt systems
- Nominal Draw: 12V 2.5 watts
.21 Amps

Note: All lights shown on this page use ABYC C-5 compliant LED light engines.

LED Navigation Lights - 2nm

Certified for both USA and European Markets

For use on power driven vessels under 20 m (65.6 Ft.)

LED Navigation Light Features:

- Horizontal mount bi-color lights
- High tech, self contained LED modules
- New stylish designs: classic or rounded
- Top options: plain or stainless steel
- Standard colors: black or white

Meets Global Specs for:

- ABYC C-5
- NMMA Type Accepted
- EN/ISO 19009:2015
- ABYC A-16 (2016)
- 1972 COLREGS
- RCD 2013/53/EU
- USCG 33 CFR - 2nm

Tech Specs:

- For 12 Volt systems
- Dimensions: 3-7/8" x 3-1/4" x 7/8"
- Nominal Draw: 12V 2.5 watts
.21 Amps
- Mounting Screw: #6 P.H.

Fig. 0655 Angled Top



Fig. 0655 Rounded Top



Fig. 0655 Ordering Information

Description	Mount	Cover Style	Cover Color	Retail Pkg. Cat. No.	OEM Bulk Pkg Cat. No.	L x W x H Dimensions
Bi-ColorLight	Horizontal Mt.	Angled	Black	0655DP1BLK	0655001BLK	3-7/8" x 3-1/4" x 7/8"
Bi-Color Light	Horizontal Mt.	Angled	Black/SS Insert	0655DP1BLS	0655001BLS	3-7/8" x 3-1/4" x 15/16"
Bi-Color Light	Horizontal Mt.	Angled	White	0655DP1WHT	0655001WHT	3-7/8" x 3-1/4" x 7/8"
Bi-Color Light	Horizontal Mt.	Angled	White/SS Insert	0655DP1WHS	0655001WHS	3-7/8" x 3-1/4" x 15/16"
Bi-Color Light	Horizontal Mt.	Rounded	Black	0655DP2BLK	0655002BLK	3-7/8" x 3" x 1-3/16"
Bi-Color Light	Horizontal Mt.	Rounded	White	0655DP2WHT	0655002WHT	3-7/8" x 3" x 1-3/16"